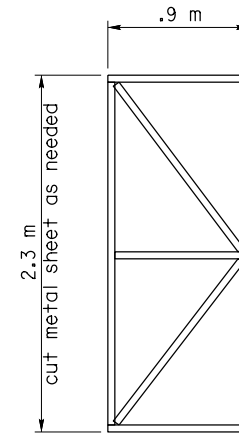
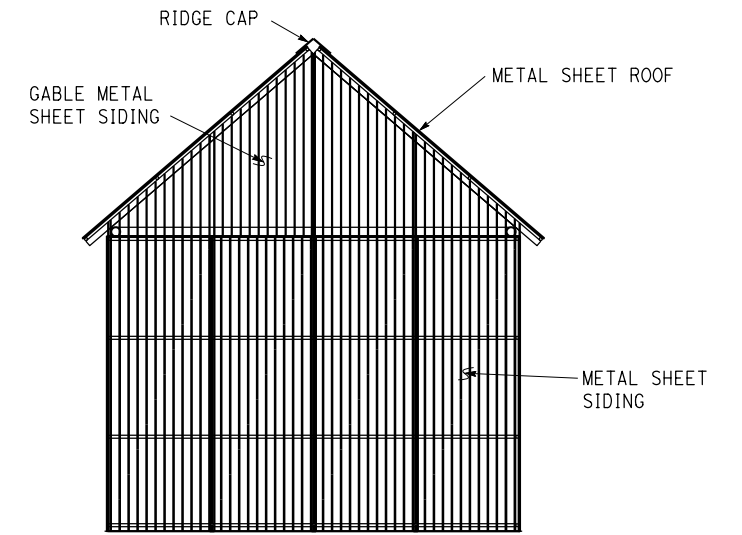


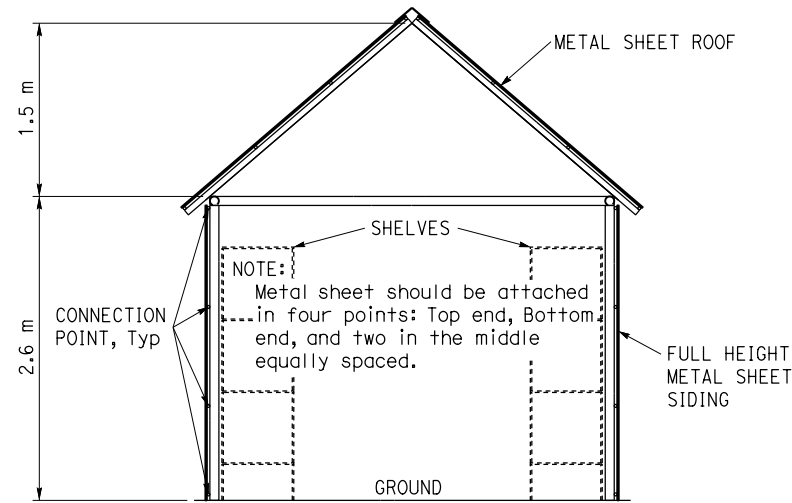
FRONT ELEVATIONS



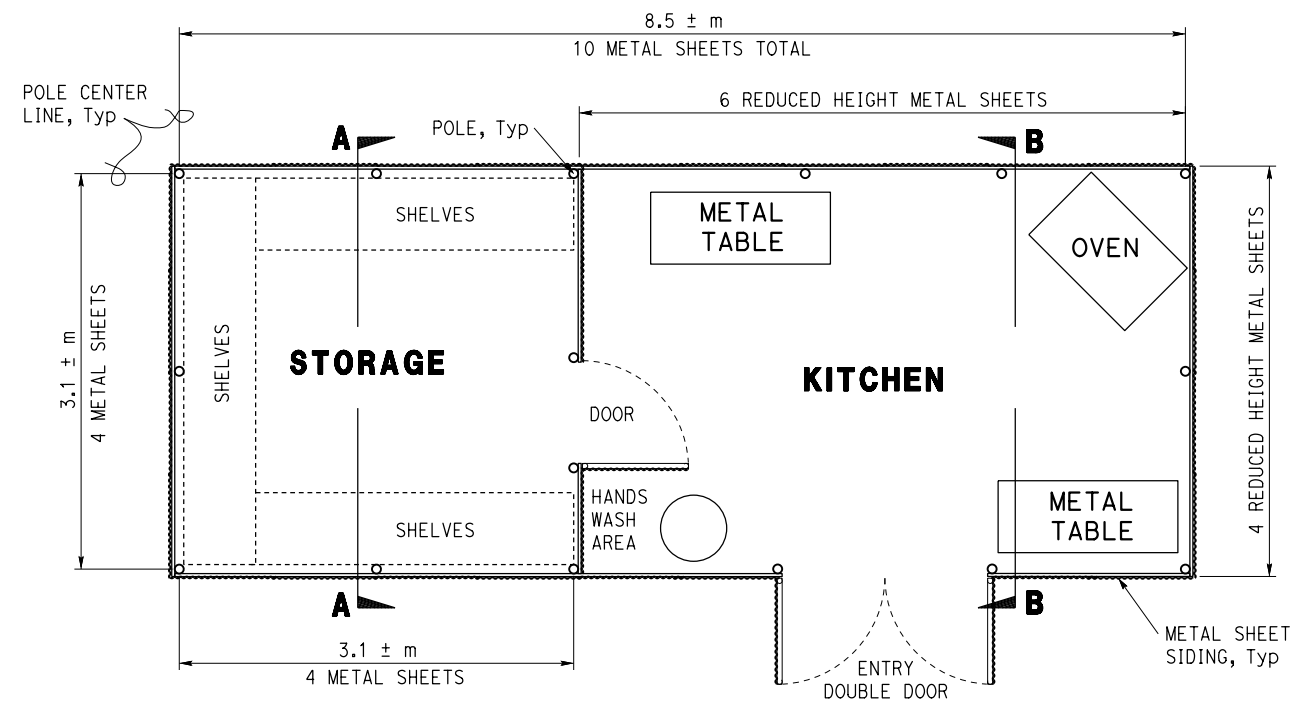
DOOR FRAME



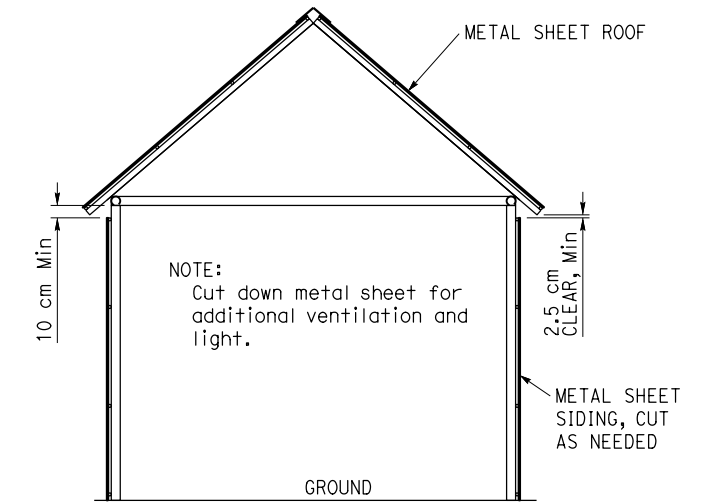
SIDE ELEVATIONS



SECTION A-A



FLOOR PLAN



SECTION B-B

NOTES:
 Roof - 20 metal sheets
 Wall - 34 metal sheets
 Gable - 6 metal sheets
 Total = 60 metal sheets
 Poles - 16 ±

**BREAD BAKERY PROJECT
 FOR REFUGEE CAMPS
 2017**

NOTE:
 The Contractor shall verify all controlling field dimensions before ordering or fabricating any material.